



Virtual Open House

Project No. 0155-0171

SAFETY AND OPERATIONAL IMPROVEMENTS ON I-84 Town of West Hartford

Presentation Starting Soon



www.i84westhartford.com



Open House Presenter:

Joshua Gray, PE, CCM, PMP
Director of Construction Services
Urban Engineers, Inc.

Questions/Comments

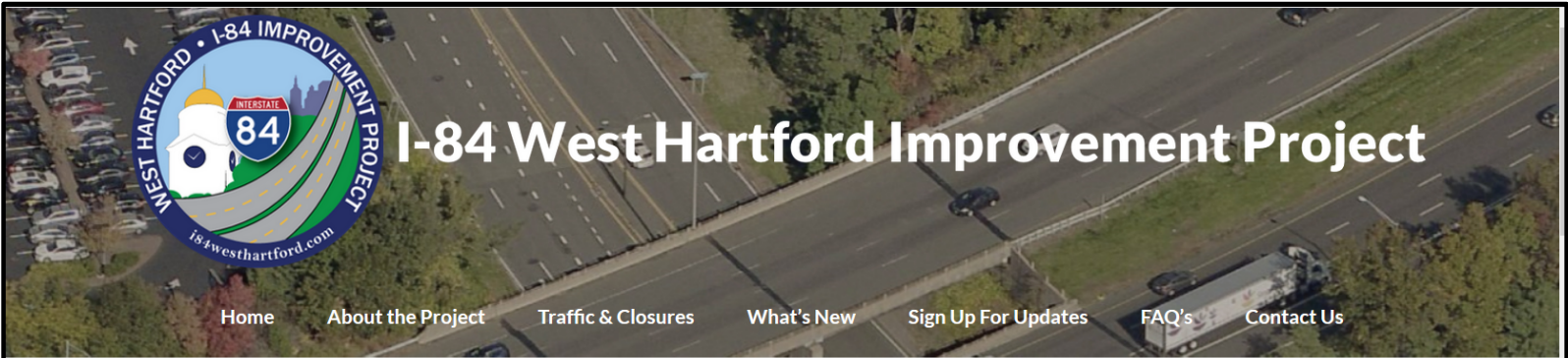
Please submit questions in the GoToMeeting Chat window or email at
info@i84westhartford.com

Por favor envíe sus preguntas en la ventana de GoToMeeting Chat o envíe un correo electrónico a info@i84westhartford.com



www.i84westhartford.com

Project Website - www.i84westhartford.com



I-84 West Hartford Improvement Project

Home About the Project Traffic & Closures What's New Sign Up For Updates FAQ's Contact Us

Welcome to the website for:
I-84 Safety and Operational Improvements in West Hartford (CTDOT 0155-0171)

Project Overview

The purpose of this project is to provide safety and operational improvements to address concerns with congestion and traffic operations on I-84. Improvements include adding an additional lane on I-84 WB between Exits 39A and 43, and between Exit 40 and 41 on I-84 EB. Bridges over Berkshire Road and Ridgewood Road Westbound will be widened or replaced. For more detailed information please visit the [About the Project](#) page.

The proposed improvements are anticipated to be constructed in three stages in order to impact traffic as little as possible. Major detours are scheduled to redirect traffic during construction from April through October so as not to impact Winter/Fall Holiday traffic.

Note: WB = westbound, EB = eastbound

The project includes the following major operations:

Translate
English

REGISTER
to receive project updates
or
Text i84info to 22828

Project Timeline
Stage 1A
On-ramp to I-84 Westbound at Ridgewood Road



www.i84westhartford.com

Project Website - www.i84westhartford.com

EXIT 30

Detour Map for closure of I-84 Westbound On-Ramp at Ridgewood Road

View Real Time Cameras, Speeds and Signs on the I-84 Improvements Project
Interactive Map

Multiple Devices ☒ Sign: ☒ Speed: ☒ Camera: ☒
Map Satellite

**VIEW THE I-84 IMPROVEMENT PROJECT
INTERACTIVE MAP**

Google

Stage 2A
Detour re-established and on-ramp to I-84 Westbound at Ridgewood Road closed. Check [Traffic & Closures](#) tab for detour info. I-84 traffic shifts with three lanes remaining open.
April 2022 - October 2022

Stage 2B
Detour removed and on-ramp to I-84 Westbound at Ridgewood Road re-opens. Traffic shifts with three lanes remaining open.
November 2022 - April 2023

Stage 3
Install final pavement and lane configuration.
Project Complete!
April 2023 - May 2023

Contract Highlights

Contract Administered by:
CTDOT

Construction Inspection:
Urban Engineers

Contract Awarded to:
O&G Industries

Estimated Construction Cost:
\$54,622,567



www.i84westhartford.com

Project Overview

- Construction Cost = \$54 Million
- Construction Schedule - March 2020 to May 2023

Owner:



Contractor:



Construction
Inspection:

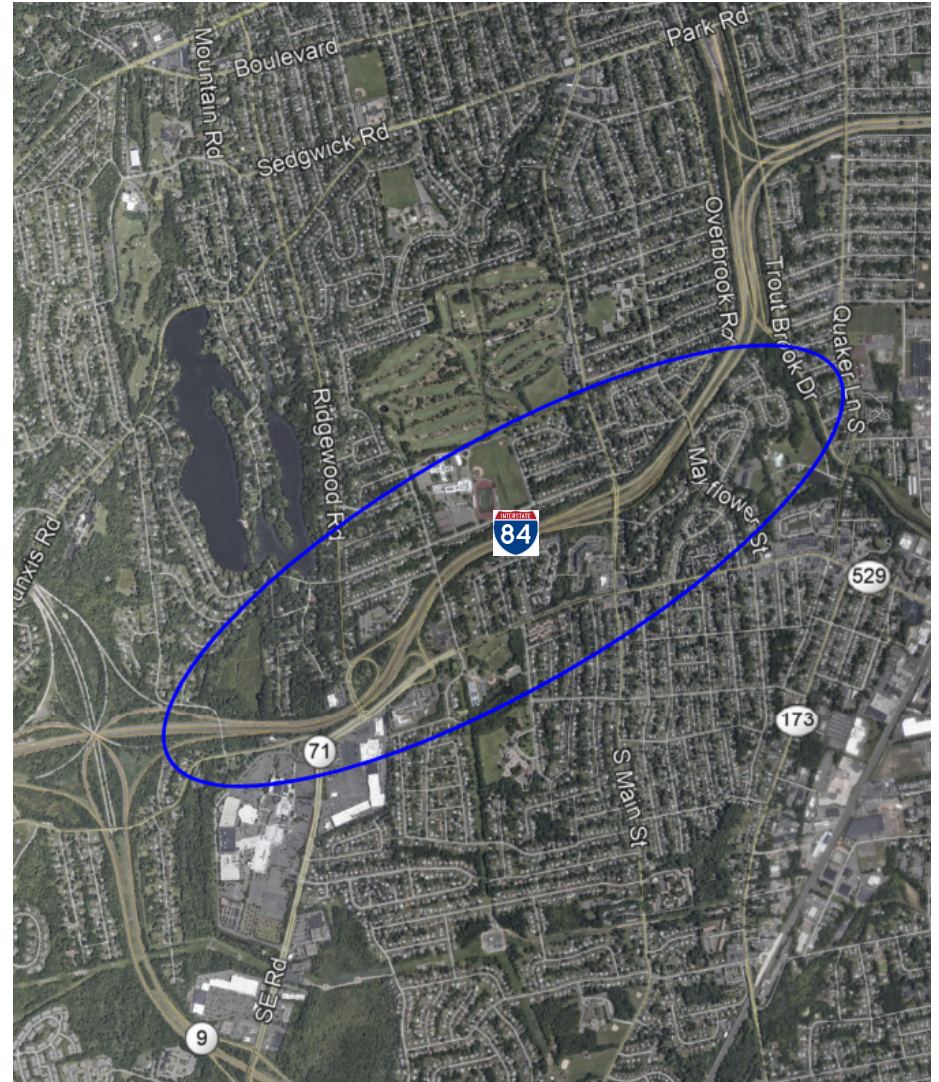


Project Location

I-84 Improvement West Hartford

Route 9 Exit 39A

Park Road Exit 43



Project Scope



- Two Mile Section of Roadway
- Add One Travel Lane EB
- Add One Travel Lane WB
- Two Major Bridge Operations
- Noise Wall Remove/Replace



www.i84westhartford.com

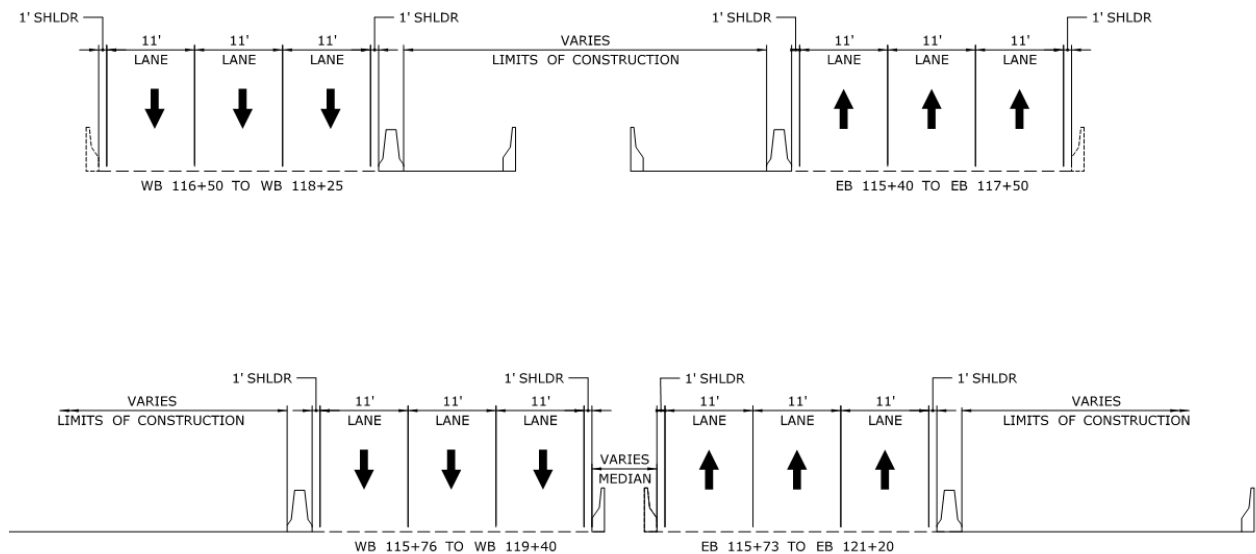
Major Operations

- Addition of Operational Lanes on I-84 EB/WB
- New pavement overlay
- Full Replacement of Berkshire Road Bridges
- Superstructure and Widening Ridgewood Rd Bridge – I-84 WB
- Removal and Reconstruction of Noise Barrier Wall
- Incident Management System
- Drainage Improvements
- Guide Rail/Signage/Illumination



Stages of Construction

- Stage 1A: Install SWZ, Close Ramp G, Mill & Seal, PMA Wedge, Shift right, I-84 Full Depth, Ridgewood Rd Bridge
- Stage 1B: Paving, IMS, Berkshire Rd Bridges
- Stage 2A: Shift traffic left, Complete Bridges, I-84 Full Depth Widening
- Stage 2B: Shift right, Open Ramp G, Install final pavement

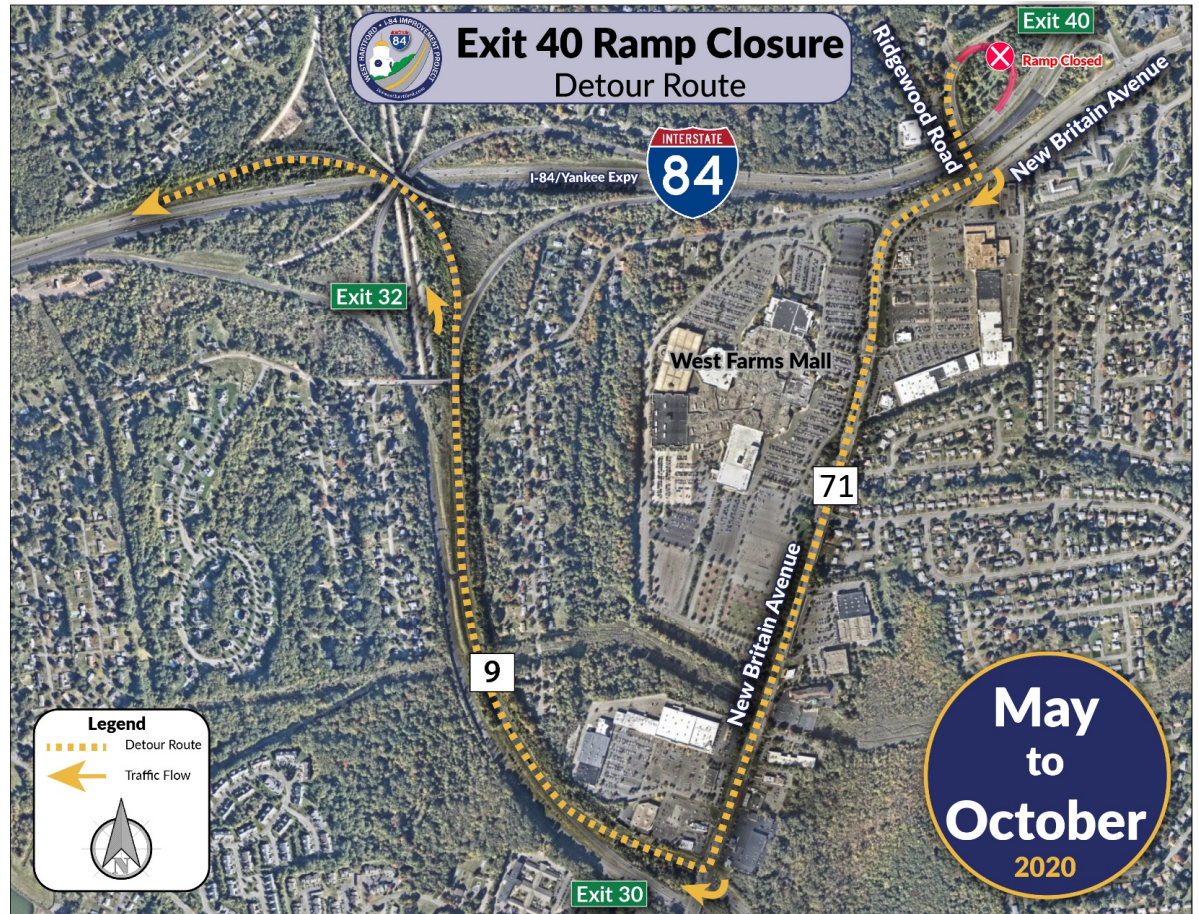


Exit 40 Ramp Closure

I-84 WB On-Ramp at Ridgewood Rd (Exit 40)
Closed May to Oct. 2020, April to Oct. 2022

Detour Directions:

- Ridgewood Road to New Britain Avenue
- Right on New Britain Ave
- Right onto Route 9 North On-Ramp
- Route 9 North
- Left Lane to I-84 WB



Questions and Answers

Please submit questions in the GoToMeeting Chat window or email at info@i84westhartford.com

Contact Us page on i84westhartford.com

Follow Us:

Register on website, **Text “i84info” to 22828**

Twitter, Facebook - @i84WestHartford

